

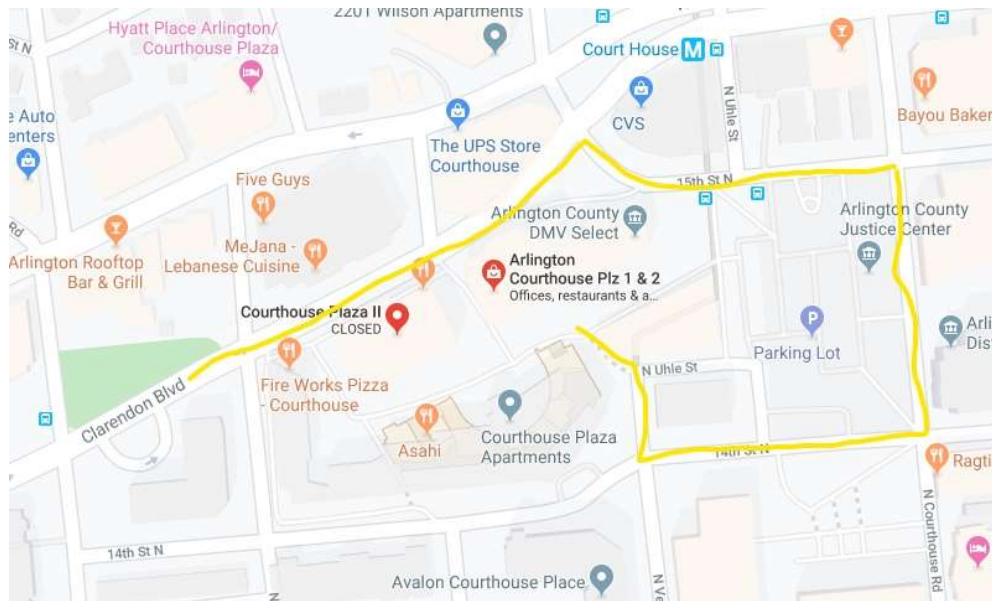


Loading Dock and Freight use at Courthouse Plaza

2100/2200/2300 Clarendon Boulevard, Arlington, VA

DIRECTIONS

From front entrance on Clarendon Blvd, take a right turn at the light onto 15th St. North. Turn right onto N. Courthouse Rd. Turn right onto 14th St. North. At the bottom of the hill, turn right onto N. Veitch St./N. Uhle St. The loading dock entrance is on the left.



TERMS AND CONDITIONS

- Reserved use of the dock and freight elevators must be pre-approved by the management office.
- Reservations must be made for moves estimated to take more than an hour which must be done after hours 6pm-6am or on the weekend. At all other times the dock operates on a first come first serve basis.
- For reserved use: the name of moving contractor or user of dock and freight must be provided along with a certificate of insurance from the contractor or moving company prior to use. COI should be emailed to athayer@jbgsmith.com. Requirements are will be provided.
- There will be a charge for trash, discarded furniture, and palettes left on the loading dock.
- No smoking is permitted in the dock area or the parking garage.
- Passenger elevators are not to be used for moving equipment and furniture.
- Include in your request the fob number for which freight access is to be authorized.
- Security guard to provide key access for independently controlled access for the freight.

RESERVATION POLICIES

- Resource cannot be used for more than 10 hours per reservation
- Resource must be reserved 3 days in advance
- Resource cannot be reserved more than 6 weeks ahead

RESERVATIONS REQUIRED

- Saturday
- Sunday
- Mon-Fri 6 PM- 6AM

FIRST COME FIRST SERVE

- Mon-Fri 6:00 AM - 6:00 PM

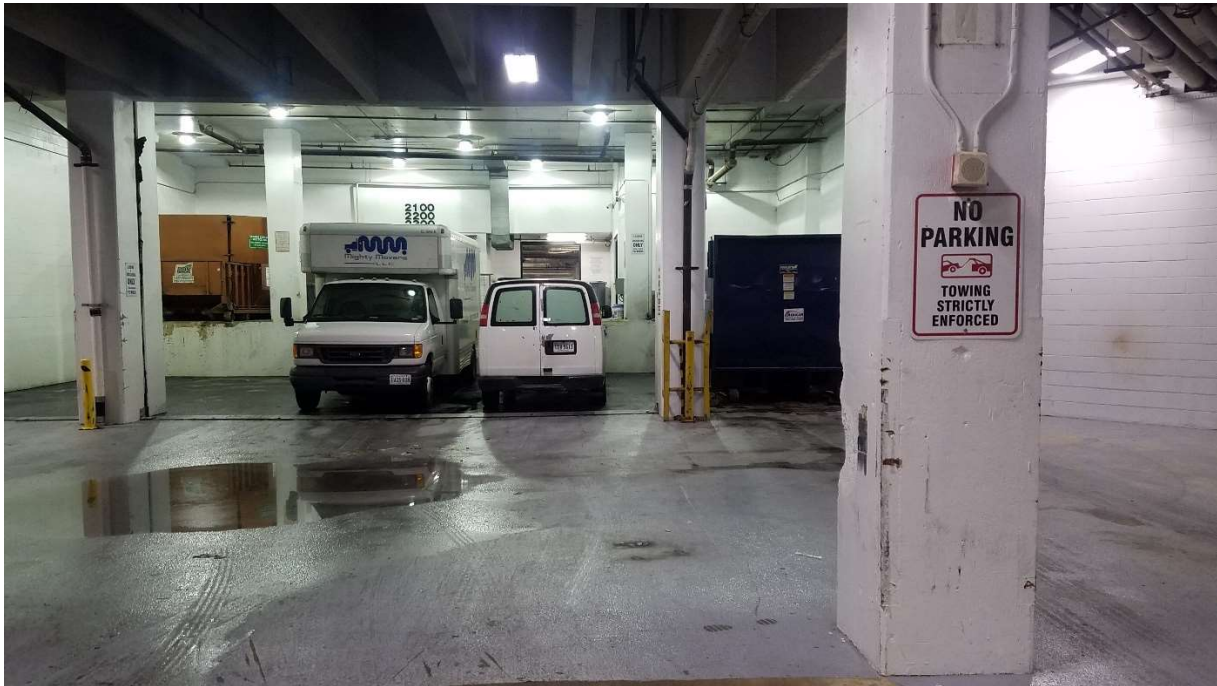
STEP BY STEP...

This is the entrance to the loading dock for 2100/2200 and 2300 Clarendon. The entrance is also used for deliveries to the apartments and the hotel in the same complex. The loading dock for CHP is on the right once you enter. The height clearance is 13 foot 6 inches.

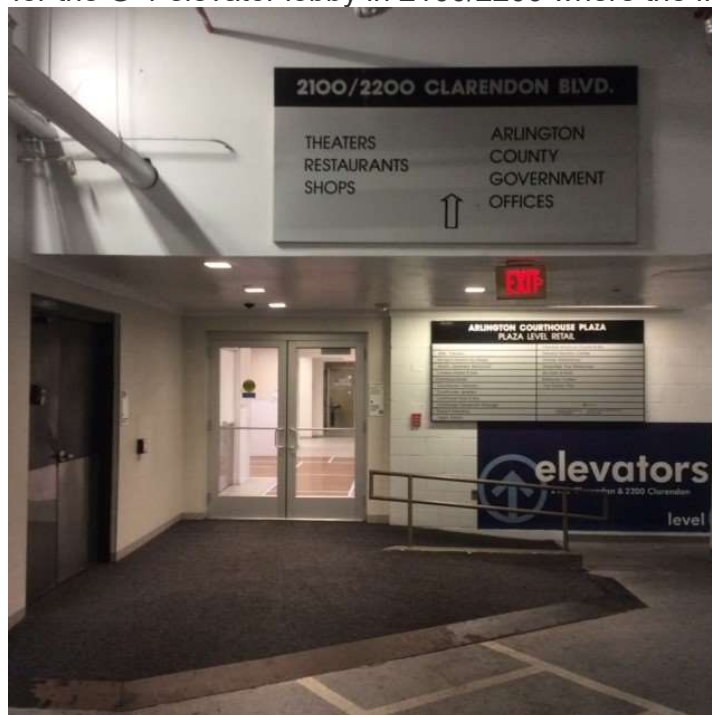


This is the loading dock for 2100/2200 and 2300 Clarendon.

The height clearance is 13 foot 6 inches.



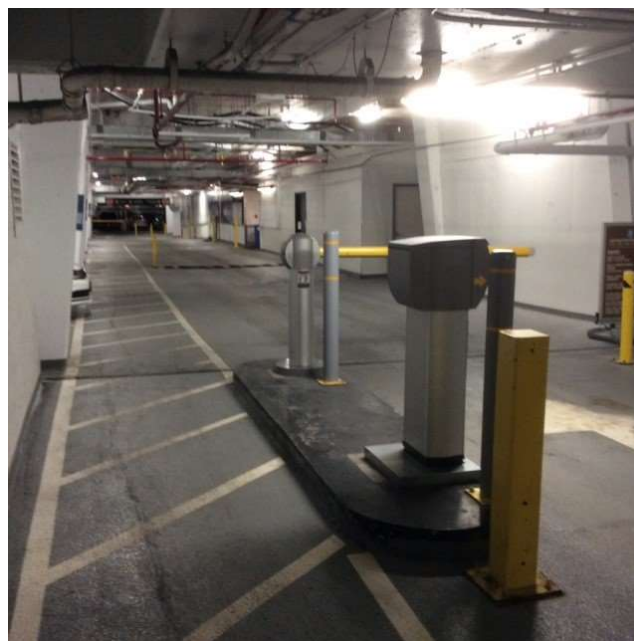
If delivering to or from 2100/2200 Clarendon, turn right once you leave the dock area. This is the entrance for the G-1 elevator lobby in 2100/2200 where the freight is located.



This is the 2100/2200 freight elevator located near the Parking office and vending machines in the G-1 elevator lobby.



If delivering to or from 2300 Clarendon, turn left once you leave the dock area. The entrance for the G-1 elevator lobby for 2300 is located in this direction.



Inside the glass doors and to the left is the freight elevator for 2300.



This is the 2300 freight elevator located near the mailboxes.



FREIGHT DIMENSIONS:

WEIGHT CAPACITY: 3,500 POUNDS

Two-Sided Entry: Door entry 7'0" x 3'4"

Interior: 9'5" height x 7'11" width x 6'1" depth.

FOR ASSISTANCE

Contact the management office at 703-522-8217 or Tenant Services Center at 703-769-1250



2200 Clarendon Boulevard, Suite G-1 | Arlington, VA 22201

www.jbgsmithconnect.com

May 5, 2022